

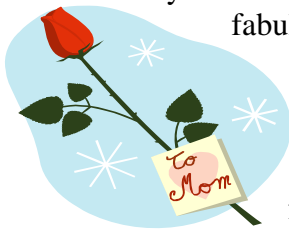


*Newsletter*

We can't believe the end of the school year has come. We've been so busy having a great time that the school year just flew by. Thank you to everyone this year for making our school such an amazing place to be a student, teacher and parent. We have been truly blessed with a wonderful group this year! We want to wish all of the children that are leaving our Montessori environment the very best with their future. Of course, we want all of you to come and visit us whenever you can. There is something special that takes place when your students come to visit you after many years. We are always wondering what career paths they will take, and what young adults they will make. So make sure that you visit when you can!

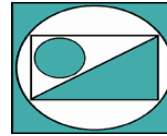


Mother's Day events were quite fabulous. Many of you were able to attend the special day that was planned just for you. The children were so excited to share some time with all of you at their place of work, our school.



*Montessori School*

*of Manhattan Beach and RPV*



**Carnival**

The Carnival was Amazing!!! There were so many families from all three schools. We wanted to take this time to thank you all for your time, help and donations for the 2010 Spring Fling Carnival. It was a huge success!!!! For more information on the Montessori Education Foundation of the South Bay, please visit: [montessorimbrpv.com](http://montessorimbrpv.com)



**Yearbooks**

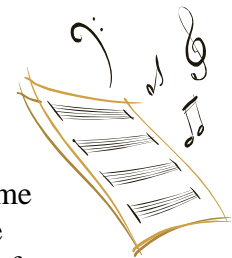
Yearbook order forms will be sent home to all of you on Tuesday, June 1<sup>st</sup>. They will be due by June 11<sup>th</sup>.

**Summer Enrollment**

There are still openings in our summer sessions. Our July session will open on Tuesday, July 6<sup>th</sup>. We have plenty of fun activities and enrichment programs coming our way. Please share with any of your friends or neighbors, that we still have openings.

**Spring Sing**

Our Spring Sing date has been set for Wednesday, June 16<sup>th</sup>. This is a great time to be together one last time during the year. For those of you



who are new to the school. The kids put on a great concert for the parents and loved ones. Start spreading the word to your family who may want to attend. Afterwards, we will be having a few snacks.

Parking is limited, sometimes the police give out tickets, so please park in designated areas. There is an extra parking lot if you follow the dirt road at the top of our parking lot to the paddle tennis courts. You can also park on the street. I encourage all of you to try to walk, carpool or arrive early in order to find a parking space for that big event.



We have hired a **DIFFERENT** company to video tape the performances. Please remember to try to not block

anyone's view when you are taking pictures. We would also like everyone to stay in their seats until the end of the performance. We will be handing out Video Order Forms for you to purchase a video soon.

Here is the schedule of each classrooms performance.

- ❖ Surf and Sand Room 9:30
- ❖ Garden Room 10:15
- ❖ Lily Pad 11:00

### PTO



**Saturday, June 19<sup>th</sup>** the PTO is hosting a school potluck to get together one last time before the year ends. It will be here

in the lower playground. Each class will be bringing some goodies to eat. Keep your eye out for a sign-up sheet in your classes.

### June Announcements!

- ❖ June- Father's Day Celebrations
- ❖ Monday, June 7<sup>th</sup> – Librarian visit
- ❖ Wednesday, June 16<sup>th</sup> – Spring Sing
- ❖ Saturday, June 19<sup>th</sup> – PTO Year End Picnic
- ❖ Thursday, June 24<sup>th</sup> – Last Day of School
- ❖ Friday, June 25<sup>th</sup>-Monday, July 5<sup>th</sup> – School Closed
- ❖ Tuesday, July 6<sup>th</sup> – First Session of Summer School Begins
- ❖ Monday, August 2<sup>nd</sup> – Second Summer Session Begins



Thanks for all that each of you do for our school!

Michelle